

THE *Camellia*
REVIEW

A Publication of the Southern California Camellia Society



Vol. 48

March-April, 1987
Two dollars

No. 4

Southern California Camellia Society Inc.

An organization devoted to the advancement of the Camellia for the benefit of mankind — physically, mentally and inspirationally.

The Society holds open meetings on the Second Tuesday of every month, November to April, inclusive at the Hall of Environmental Education, Arboretum, Arcadia. A cut-camellia blossom exhibit at 7:30 o'clock regularly precedes the program which starts at 8:00.

Application for membership may be made by letter to the Secretary. Annual dues, \$15.00

OFFICERS — 1985-86

SERGIO BRACCI, President
5567 N. Burton Ave., San Gabriel 91776
Tel. (818) 286-4338

CHUCK GERLACH, Vice-President
3721 Cedarbend Dr., La Crescenta 91214
Tel. (818) 248-3838

WARREN DICKSON,
Secretary-Treasurer
1935 Apex
Los Angeles, CA 90039
Tel. (213) 661-8453

MILTON SCHMIDT,
Foreign Representative
1523 Highland Oaks Dr.
Arcadia Ca. 91006
Tel. (818) 446-5525

DIRECTORS

DEAN ALLTIZER
1253 Bruce Ave., Glendale 91202
Tel. (818) 241-1211

CHUCK GERLACH
3721 Cedarbend Dr., La Crescenta 91214
Tel. (818) 248-3838

JERRY BIEWEND
1370 San Luis Rey, Glendale 91208
Tel. (818) 242-8622

WALLY JONES
2220 Fisher Ct., Redondo Beach 90278
Tel. (213) 372-7550

MELVIN BELCHER
6025 Brydon Rd., LaVerne 91750
Tel. (714) 593-4894

GRADY PERIGAN
1380 Winston, San Marino 91108
Tel. (818) 792-0829

SERGIO BRACCI
5567 N. Burton Ave., San Gabriel 91776
Tel. (818) 286-4338

GLENN SMITH
695 Winston Ave., San Marino 91108
Tel. (818) 792-9914

JULIUS CHRISTINSON
3751 Hoover St., Riverside 92504
Tel. (714) 688-1547

JOHN UTVICH
2975 Somerset Place, San Marino 91108
Tel. (818) 286-5555

WARREN DICKSON
1935 Apex, Los Angeles 90039
Tel. (213) 661-8453

DAVE WOOD
2434 Allanjay Place, Glendale 91208
Tel. (818) 247-1986

HONORARY LIFE MEMBERS

WILLIAM W. DONNAN
HAROLD E. DRYDEN
COLONEL TOM DURRANT
WILLARD F. GOERTZ
BERNICE GUNN

JOSEPH NUCCIO
JULIUS NUCCIO
CARYLL PITKIN
WILLIAM E. WOODROOF
A. WILKENS GARNER

FOREIGN REPRESENTATIVES

MAURIE S. POWELL
P.O. Box 234, Waikanae Beach, New Zealand

BRUCE ROSE
7 La Boheme Ave. Caringbah, N.S.W. Australia 2229

The CAMELLIA REVIEW: Glenn Smith, Editor, 695 Winston Ave., San Marino 91108
Tel. (818) 792-9914

PUBLISHED BY THE SOUTHERN CALIFORNIA SOCIETY, INC.

Copyright 1986

Four issues per volume—September, December, February, and May.

All manuscript for publication and correspondence should be sent directly to the Editor. Reproduction permitted, if due credit is given the Camellia Review and the author.

CHANGE OF ADDRESS: Notify the Secretary at once. Magazines are not forwarded by the Post Office.

TABLE OF CONTENTS

Vol. 48

March-April, 1987

No. 4

Innovations from Pomona Valley	
III. Reaching Out to the Community, Marilee Gray	3
Contributors to The Camellia Review Fund	5
Contributors to The Camellia Nomenclature Fund	5
Discussion of Pruning at Pacific Meeting, Leone Summerson	6
A Working Reminder for Chief Clerks, Frances Butler	7
A Tribute to Redwood City Peninsula Camellia Society, Howard E. Burnette	9
Letter to William Donnan, Andrew F. Sears	10
Camellia Show Results — Delta Camellia Society	11
Camellia Show Results — Descanso Show	12
Camellia Show Results — Huntington Show	13
Camellia Show Results — Camellia Society of Kern County	14
Camellia Show Results — Pomona Valley Camellia Society	15
Camellia Show Results — The San Diego Camellia Society	17
Camellia Show Results — South Coast Camellia Society	18
Camellia Show Results — Temple City Camellia Society	19
Bill Woodroof, Pat Greutert	20
Index	24

COVER PHOTO

STAR IS BORN is a light coral pink, very large semi-double, with upright and vigorous growth. Developed by Nuccio's Nurseries, 3555 Chaney Trail, Altadena, CA 91011 . . . who also furnished the color separation.

AN INVITATION TO JOIN THE SOUTHERN CALIFORNIA CAMELLIA SOCIETY

The Southern California Camellia Society will welcome you as a member. For your convenience an application blank is printed below.

ANNUAL MEMBERSHIP — \$15.00

Includes Subscription to Camellia Review — Four issues per year and revised 1987 edition of "Camellia Nomenclature" — 150 pages with descriptions of over 4,000 camellias

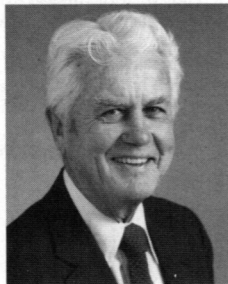
Please Make Payment to:

SOUTHERN CALIFORNIA CAMELLIA SOCIETY
P.O. Box 50525, PASADENA, CA 91105

Name _____

Address _____

City, State and Zip Code



THOUGHTS

from the editor

My sincere thanks to Bill Donnan and especially to Pat Greutert, who stepped in during my absence and did a sterling job on *The Camellia Review*.

Dave Wood, former Society president, prints *The Camellia Review* for us. He tries every way he can to do this inexpensively. One of his money saving devices is printing the *Review* covers over the summer when business is slow. That means *all* the covers for the following season's four editions. This, of course, includes the inside back cover which lists all the California societies, their officers and meeting times and places. If we don't have that information before going to press, we print last season's information. Four issues will appear with that information, correct or not.

As soon as your society elects officers, please send us their names along with the meeting times and location so that we can have accurate listings.

Huntington Position Open

Due to the death of Rudy Moore, Horticulturist of the Camellia Garden, the Huntington is now seeking applicants for this position. Those applying should be knowledgeable about camellias, azaleas and other shade plants and have worked professionally as a gardener. For further information, write Myron Kinnach, Curator, Huntington Botanical Gardens, 1151 Oxford Rd., San Marino, CA 91108 — or phone (818) 405-2161.

WRITERS WANTED

SEND ARTICLES, COMMENTS, CLIPPINGS, SUGGESTIONS — ANYTHING OF INTEREST TO YOU AND OTHER CAMELLIA HOBBYISTS. BLACK AND WHITE PICTURES APPRECIATED.

Innovations from Pomona Valley

III. Reaching Out to the Community

by Marilee Gray

Preface: When new faces began appearing with regularity at our meetings and functions, we got inquiries about our recruitment program. Eventually, we were asked to write up our program in the event some facets of it might benefit other societies.

This is the third and final article describing the activities and functions of the Pomona Valley Camellia Society. Most of what will be discussed here can hardly be considered innovative. However, describing our activities in total *and our motivations* gives insights into a society that is somewhat unique.

To begin with, it is important to understand what we perceive the purpose of our society to be. We are, first and foremost, a service organization. While we strive to make this a socially enjoyable organization, our prime commitment is to present something of beauty and educational value to our communities.

Unlike most societies, Pomona Valley has had a sponsor. For many years, we have enjoyed the support of a locally-based financial institution. They have provided meeting and show facilities and supporting personnel — so essential since suitable county facilities are not available in this area. Therefore, above our original commitment, we have an added obligation to our sponsor to reflect positively to the community and be an extension of their public service program. The knowledge that we will annually report to their board and be held accountable keeps us conscientiously striving to better our community services and to earn their continued support.

With this motivation, it is not surprising that we do not have a membership program per se. New memberships are usually a by-product of our community-oriented activities. When an interested party feels that this organization has something worthwhile to

offer, the impetus for joining initiates with him. This thinking runs cross-current to the most-heard membership recruiting, which asks members to bring friends to meetings and then try to get them interested enough to join.

There is a definite need for what we have to offer our communities. Retired people need hobbies that will fill their days with challenge and creativity. Younger people need diversion and relaxation from their jobs. For many people, the hobby of growing camellias can fill this need.

The challenge our society must meet is how to effectively make our program known and available to our communities. The most obvious means is through our shows. Our novice and intermediate classes are intended to generate community participation in our shows.¹ This year we have added two positions to our show committee — the new exhibitors' assistant and the floor host. The floor host is responsible for having members at the show at all times to answer questions and advise the public. In a further attempt to communicate with the public, we place signs on the appropriate display tables that define a novice, an intermediate and a special culture bloom. Other signs invite inquiries: "Questions? Ask a show host or hostesses" and "This is an excellent time to select new varieties for your garden. Check with a show host or hostess to determine if the varieties you have selected should do well in your area or in their intended location." In conjunction, we have a culture sheet available that includes a selection worksheet with a description and comment column for each variety they note.

The mini-show² is designed to educate the newer exhibitors and to improve the local growers' camellia selections. At both shows, cultural discussions and demonstrations on graft-

ing and pruning are important educational presentations. A "Clark Thomas Award" display is also featured at our shows. The award is one established by our society to recognize newer varieties that perform well in our area. This display features the latest award winner as well as blooms of previous winners and is of great interest to the public. The plant sales accompanying our shows are small, but they include very select varieties; our goal is not to make money but to place choice varieties in local gardens.

While many dispute our show philosophy, we believe that the first objective of our shows is to present something of value to the public. Our second obligation is to the exhibitor — not to provide costly awards, but to provide a schedule and judging that give each variety and each bloom its fair consideration. We have an ambitious garden display program³ that funds the best show we can host. The quality of the awards is to draw the greatest number of exhibitors possible and, therefore, to provide the best show possible for the public. Were the purpose of our shows merely to award and recognize exhibitors, then our shows would accomplish little of real consequence, for our functions would be directed toward our own self-interests.

We anticipate that our shows should generate new interested parties. Therefore, the program at our March meeting (the first meeting after our shows) is specifically planned to provide the kind of information newcomers will find most interesting. It is a program that deals wholly with varietal selection — the pluses and minuses of the varieties that have been seen at the shows, the temperamental bloomers, the good growers, the phytophthora-prone, the most desirable of a similar flower from a bloom and a growing standpoint, etc. It is the kind of program that newcomers delight in and take home in pages and pages of notes.

Also, we recognize that newcomers to a meeting are there to learn about

camellias. Programs on ferns, fuchsias, begonias, orchids, or travel are interesting, but do not answer their immediate questions. Therefore, we have initiated a new meeting format this year. During the half-hour prior to our regular meeting and program, we have what is called our "Camellia Culture Segment." Each month we include those topics most timely for that specific time; before the year is over, we will have covered most aspects of camellia culture.

Other ways by which we encourage interested parties and newer members are by assisting them with pruning, grafting, gibbing, planting, and repotting, as needed. Knowing how intriguing the gardens of established growers are to newcomers, we schedule garden tours whenever possible in conjunction with brunches or shows. Taking new enthusiasts on shopping trips to Nuccio's Nurseries or Kramer Brothers to get good varieties and good plants is another way we encourage them.

But our concern is not wholly for the newcomers. The Pomona Valley Society recognizes developers through the aforementioned Clark Thomas Award. In addition, in 1985 we offered new classes at our show for the yellow camellia and the fragrant camellia. Initially, we determined that we would continue these classes even if the entries were few or none in the beginning because we saw these areas as ones in which work and progress needed to be encouraged and recognized. From the beginning, we have been more than satisfied with the entries in these classes, and we expect these to continue to be interesting, growing classes.

Outside of our shows, we have a number of activities through which we make our presence known in our communities. Our off-season activity of garden display work not only funds our society but provides beautiful landscapes that are appreciated by many, many thousands of fair-goers. This is a very demanding, but rewarding, activity as evidenced by the fact

that it involves many within our society and even some who are not otherwise involved in any way but who simply enjoy the participation. We function on the premise that an active society is a stronger society, so we have not accrued a financial cushion that would allow complacency. Instead, we closely correlate our show expenses and donations with our income.

In conjunction with our Los Angeles County Fair displays, last year we began giving presentations on camellias and shade gardens at the fair. This proved so successful that the show director has promised us frequent, scheduled, publicized programs for another year.

We also provide speakers and programs for a variety of groups — philanthropic, religious, senior citizen, and other horticultural organizations. Whenever we present programs, we also make available our culture sheet that contains a contact for further information. At one senior center, we annually provide a program and conduct a bloom competition just prior to our shows. The awards given are minimal, but the enthusiasm is terrific, and it carries over into our regular shows.

To the extent that we are able, we provide blooms for various community functions, luncheons, convalescent

homes and hospitals. Individual members are responsible for camellias appearing in business offices, medical offices, schools — wherever their beauty can be enjoyed. From the beginning to the end of the blooming season, Ikebana arrangements with camellias are on display at one or more of the branches of our savings and loan sponsor. Notices of our meetings and local shows beside those arrangements provide good publicity. This is in addition to the outstanding coverage which the local newspapers give us.

We have yet another program pending that could be very interesting. In an area of LaVerne, surrounded by new housing, is a wilderness area under oak trees. Present plans are that, when the city has completed the necessary improvements, our society will plant and direct a camellia garden. If and when this becomes a reality, it will present a marvelous opportunity to conduct culture seminars for the public.

This pretty well summarizes what our society does and what we hope to do. While applauding the accomplishments of good growers through our shows, we want also to provide a meaningful program for the gardener who merely wishes to enjoy his garden. Giving enrichment to life — that is our simple and total objective.

CONTRIBUTORS TO THE CAMELLIA REVIEW FUND

Mrs. Rudy Moore
In memory of Helen Barber
Leland and Arlene Chow
In memory of Rudy Moore
Chuck and Rosamond Gerlach
In memory of Ted Alfter

Ab and Leone Summerson
In memory of Leita Alltizer
Caryll and Pauline Pitkin
Chuck and Rosamond Gerlach
Tom and Elsie Hughes
Ab and Leone Summerson
Harry Sewell

Send contributions for Camellia Review Fund to:
Warren Dickson, 1935 Apex Avenue, Los Angeles, CA 90039

CONTRIBUTORS TO THE CAMELLIA NOMENCLATURE FUND

American Camellia Society

G. Stewart Watson

Discussion of Pruning at Pacific Meeting

by Leone Summerson

Transcribed by Helen Perigan

I like the camellia hobby and the shows, but I also like to share my flowers with friends and with organizations to which I belong so I therefore like to grow the best flowers that I can and that takes care and pruning.

I would like to speak a bit about white blooms. I love white flowers. Have you ever gone out to your garden at night and looked at the flowers? What do you see? You don't see the red ones, you don't see the pink ones, but you do see the white ones. I think that white flowers are the most overlooked flowers in the shows. I think that if we had more women judges we would have more white flowers up on the head tables. Men seem to go for those big red, red blooms. Stop and think about it a minute; there is no greater accomplishment than to take a perfect white flower to a show, they damage more readily, every little mark shows, they don't take much handling. I would like to see a trophy for the best white flower.

I have strong opinions about screening flowers in a closed show. I think that flowers should be screened. I am glad that we do not have open shows down in Southern California. I think it is poor policy if you are trying to interest the public in camellias. They see these great, big beautiful flowers at the show and they think that they can buy a camellias like it and go home and grow it that same way. This is the case against gib. If the show is open and gib and no-gib flowers are exhibited together, then you know what you are up against, but the public doesn't. I also think that on a judging team if a judge has a flower under consideration then that judge should step aside and not participate at that time. It is difficult to be impartial when your flower is there, because you brought it because you

thought that it was special.

Now for pruning. I have a reputation of being ruthless when it comes to pruning. I don't think that I prune as drastically as I used to. I do think that you have to prune regularly and fairly heavy to get nice flowers. Some camellias can be pruned as a hedge if you want a hedge but that is not the way to get good flowers. They don't always look beautiful when you are finished but you have to get rid of all the dead wood if they haven't been pruned or trimmed for a while. By opening up the plant it is more beautiful in the laciness of the plant and the glory of the flowers at the same time.

I think you should get a pair of pruners that fit your hand the best. There are several different kinds but the blades should be such that you can cut very close to the stem that you leave. You must be careful not to leave stubs, cut as close as you can and maybe cut a second time, closer. I usually start at the bottom of the plant and work up. At pruning time you don't leave buds that will flower because you may never get back to that plant to prune it off after flowering.

If you want to trim back a long branch, look for a growth bud at the point where you need to cut back the branch. Be sure that what you cut off will leave a growing branch growing outward and not inward. The main reason that you prune is to keep the plants healthy. Air circulates better and new branches have a chance to develop. When a plant has lots of inside dead wood, every insect in the world looks for that plant.

There is also some summer pruning needed. There will be some new growth come out where you don't want it. It is easy to take off with just your fingers when it is young and tender. Some of this can still be done when you are first disbudding the young small buds.

Happy pruning, and I wish you a beautiful garden with camellias. ❀

A Working Reminder for Chief Clerks

by Frances Butler

1. If it is possible to have two persons to a clerking team, this is the best plan. The First Clerk places the first (blue) and second (red) award stickers. The Second Clerk places the third (yellow) award sticker. The Second Clerk runs the bloom to the Head Table and also opens, separates (old cards) and turns the cards of non-placed blooms. Cards of second and third place blooms may be separated and turned as the clerks work the area. Before leaving, clerks should check their area to turn all cards so that the names of the bloom and the exhibitor show. (New cards need only be turned.)

2. If there are enough workers, one person should be assigned to the Head Table to return blooms that are screened back. This is almost a necessity for shows with a large number of entries. Spring shows at Descanso nearly always need this added assignment. Sometimes it is a good idea to plan for this even if you have to work with a couple of single clerks. This plan avoids the problem of having the runners necessary for the clerking work being used to return screened-out bloom.

3. If you have only one clerk to a judging team, get runners, particularly for the single bloom divisions. One runner can often serve two or three teams of clerks and judges according to the set-up of the show. They will need trays for this work.

4. It is necessary for the Chief Clerk to look over the show and assess the situation. A team of judges sending bloom directly to the Recording Table can usually get along with only one clerk. This team often works classes such as seedlings, novice, grafted plants and even species on occasion. You sort of have to "go by feel." Sending in extra clerks to help if needed is often a good idea. Ask all teams to report to you when their judges are finished. Then you can re-assign extra

help as needed. If you are lucky, you may have clerks who will see and do this extra work on their own initiative.

5. It is not unknown for a Chairman of Judges to run in an extra judging team. For this reason, you really need to walk the show immediately after the judges come out of their briefing. You need to check to be sure that all teams are working with their judges and that all judging teams have clerks.

6. It is sometimes wise and even necessary to gently suggest to a Chairman of Judges that an early finishing team be re-assigned work toward another team in an area where there seems to be a slowing down. (It is not unheard of for there to be a slow team, particularly if it is inclined to lengthy deliberation.) Also the entries may be particularly heavy in some area that does not normally have a large number of blooms. You may suggest in a sort of off-hand way that it would facilitate an earlier end to the general judging and permit the Head Table judging to start more quickly. Experienced Chairmen of Judges quickly spot any slowing up and deal with it.

7. The Chief Clerk should walk the show toward the end of the judging to be sure that the cards (old type) are separated and all stickers are in the right place (on the side of the card identifying the variety and the exhibitor). Try to have several people help with this. This is repetitious, but the stickers must be on the side of the card that identifies the variety and the exhibitor and this side must be face up after the judging is completed.

8. One of the early jobs on Show Day is to push until you get a copy of the judging teams and their assignments. You may have to copy the information from the Chairman's assignment envelopes (often you are lucky and the Chairman of Judges has a copy ready for you). Then, after you recruit your own help, you can estab-

lish the clerking teams according to your estimate of the needs of the show. It is possible to cut down to a single clerk if a division is sparsely entered. On some shows, one clerk can readily handle the work on multiples. On others, particularly if the multiples are being sent to a Head Table, you will need two clerks or one runner for each two judging teams.

Odds and Ends — But They Are Really Important

Be sure to find some responsible person to **STAY WITH THE PURSES**. This is quite important, for you don't want clerks or judges with purses on their arms. A swinging purse tends to be hard on the blossoms.

In cooperation with other societies, if it is possible or practical, try to hold with the plan of having the judges indicate blooms that are to go to the Head Table with a light green sticker ($\frac{1}{4}$ " dot). In the same way, blooms screened back from the Head Table and restored to their places on the show tables should have a large dark green sticker ($\frac{3}{4}$ " dot). The stickers would need to be purchased by you or the Show Chairman. The dark green dots would serve at least two or three shows, and the light green dots would normally last for two shows. This practice avoids confusion for the clerks who need to be able to quickly recognize that a bloom has been sent to the Head Table and returned.

You need to arrange to have several people to handle the Honor Table bloom after the tabulation of votes. Honor Bloom should have some distinctive sticker or ribbon: small gold seals, distinctively colored large dots or gold ribbons. The Show Chairman or Chairman of Judges should plan this and have the material ready, but I have found that they often forget. You need to remind them and help them plan. This frequently comes up after the show is underway. Whether the Honor Blooms are returned to their places on the tables or placed in a special area

needs to be planned ahead or quickly arranged for, before the final Head Table Ballots are completed.

It is imperative to give the clerks specific instructions, **VERBALLY**. I have used quite clear printed instructions, but I find that they rarely read them. In this presentation you need to emphasize:

First Place stickers go around the edge of the card and the card is left face down on the table (new type card). For either of the folded cards, the card should be opened and the sticker placed around the edge of the section that shows variety and exhibitor. The card is closed and left with the bloom. After judging the cards are turned face up or separated and the portion showing the variety and exhibitor left with the bloom.

Second and Third place stickers go on the side of the card that indicates the variety and exhibitor (new type card). For the folded cards, open the card, separate the two parts, place the sticker on the section of the card that shows variety and exhibitor and leave that portion face up with the bloom.

Cards of all non-placed bloom should be turned over (new type) and the old cards should be opened and the part that identifies the variety and the exhibitor should be left face up with the bloom.

If possible, have written assignments identifying the judges with whom each team of clerks will be working and the area of the show that these judges are assigned to judge. You should also include the location of the Head Table where the blooms will be taken. As a last resort, remind your clerks to find their judges and follow them to the area to be judged. This is of particular importance when a judging team has several areas to judge.

In addition, try to have trays for runners to use in carrying bloom. In some shows, multiple trays are very satisfactory and are generally availa-

ble. Check with the Show Chairman in advance, for you should know your own society's needs and what is available for your show. Generally, the following is true:

South Coast — no trays of any kind available

Pomona — Trays from dining area may be used. Also there may be multiple trays

San Diego — Multiple trays normally available — check with Show Chairman

Temple City — Multiple trays usually available unless entries are heavy

Descanso Shows — Winter and Spring — Multiple trays are normally available

(A note — the rigid lids of some plastic boxes make good trays.)

A Tribute to Redwood City Peninsula Camellia Society

by Howard E. Burnette

The Peninsula Camellia Society, in gratitude to Redwood City's Parks and Recreation Department for providing free space for the group's annual camellia show, has provided a collection of plants to enhance the landscaping around the Community Activities Building and the nearby Veteran's Memorial Center.

Howard Oliver, a geophysicist of Menlo Park and an expert on camellias and rhododendrons, prescribed the plants' locations, soil requirements and fertilizers. The Park Department crews followed Oliver's directions to the letter and all plants came through the 1986 season in good order.

Jack Mandarich of Menlo Park, a former president of the American Camellia Society, and an avid camellia collector and hybridist assisted in the delineation of this project. It is difficult to put a dollar value on an undertaking

such as this . . . Many plants were propagated by ACS members, some being 7 to 8 feet tall. In addition, the city has purchased rhododendrons and azaleas to complement the camellias.

Highlighting this collection of rare camellias will be a *C. reticulata* hybrid named "Redwood City" which was propagated by Frank Pursel, late of Oakland, CA, and a P.C.S. member of long standing. The entrance to the Community Activities Building will be graced by cultivars of *C. chrysantha*, the yellow blooming species which have been recently received from China.

The Society is pleased with the way this project was displayed by supervisor Louis Hernandez and his gardening crews. Properly cared for, these plants will provide many years of blooming pleasure for the citizens of Redwood City.



December 28, 1986

Mr. William W. Donnan

Dear Bill:

The current issue of the A.C.S. Camellia Journal arrived about a week ago but with all the work getting ready for the holidays, trips to the doctors, etc., I did not get a chance to read it until last evening.

I really enjoyed your article, "Registration of New Varieties." I had thought some method should be adopted to identify the shade and color of blooms such as the R.H.S. color chart, but agree that many factors can affect the color of camellia blooms — the amount of sun or shade where grown, the vigor of the plant, the

level of the various nutrients in the soil, etc. As an example, I have found that spraying a plant in average condition with a solution of 1 spoonful of blood meal to 1 gallon water a few days before the buds start opening can increase the intensity and brilliance of the color.

As for the time of blooming, I have a large plant of "Arajishi" which was propagated from a cutting of a plant over 40 years ago. The parent plant often had its first bloom before August 1st and always before October 1st. My plant has never produced a bloom earlier than December 5 and usually it is March 1st before it starts.

I once bought a plant (blooming size) of "Daikagura" so as to have an early blooming plant. I planted it against a chain link fence in full sun. In the twelve years I had it, it never produced a bloom before March 1st. Often it was closer to April.

I have a three-year-old graft of "Sylvia May Wells" that had its first bloom October 17 this year. Seven more buds have not started showing color yet.

Ed Lewis of Bellevue, Washington, notified me that his large plant of "Mrs. D. W. Davis" was in full bloom July 19th. It suffered a sharp frost in early November and proceeded to set a new crop of buds.

Back in the 40's, I bought an 8-year-old "Monjisu Red" plant less than three feet high as I wanted a slow, low growing plant for under a front window. In 4 years it was 7½ feet high.

That is what makes camellias so fascinating. They are unpredictable. You advise not to use the term "incomplete" in describing a bloom. I believe it definitely should be used in its true botanical sense.

I once knew a Dr. Krause, a botany professor who was one of, if not *the* world's leading hybridizers. He started his career in Oregon, but after teaching for 30 years at Cornell and the University of Michigan, retired and returned to Oregon with a desire to start trying to improve camellias — hardier plants that would not retain faded brown blooms on the bushes (this was in the early 40's and little was known about hybridizing camellias or even crossing varieties of camellias). After spending over a year seeking advice from camellia experts of that time, he acquired over 300 plants and facilities for his research at Oregon State University at Corvallis. When they bloomed for him, he found that over 1/3 were "*incomplete*." They didn't have normal pistils or did not produce viable pollen and could not produce seed. He became discouraged and gave up.

I believe that Nomenclature Book should list, when known, whether a plant bears seed and/or viable pollen, or at least a note of those that have proven to be exceptional parents for hybridizers.

Also, although hardiness of individual plants varies greatly depending on location and conditions under which they are grown, there should be some indication as to how hardy they *might* be expected to be. Some varieties are definitely known to be quite tender and others are recognized as being fairly hardy.

Another bit of information that perhaps could be stored in the computer about a variety when possible and perhaps made available to the public (possibly for a fee), is where a variety could at least be seen and preferably where a plant or scion could be obtained.

A plant should not be known as a valid variety if it is not known whether or not it still exists. Of course the name should never be reused.

I am still trying to locate "Sylvia May" and "Robbie" and there are many others I would probably obtain if I knew where they were available.

I know some of my ideas are probably not feasible, but we can dream. I hope to see you at the April A.C.S. meeting.

Sincerely, Andrew F. Sears

Camellia Show Results

Delta Camellia Society

Moraga, Feb. 21-22, 1987
 Number of Blooms Displayed 1,819 — Attendance 236

Best of Show	<i>Nuccio's Ruby</i>	Larry and Nancy Pitts
Japonica Very Large	<i>Elegans Supreme</i>	Mrs. William Breuner
Runner-Up	<i>Mrs. D. W. Davis</i>	Larry and Nancy Pitts
Japonica Large	<i>Katie Var.</i>	Larry and Nancy Pitts
Runner-Up	<i>Miss Charleston Var.</i>	Mrs. William Breuner
Japonica Medium	<i>Gwenneth Morey</i>	Robert E. Ehrhart
Runner-Up	<i>Fred Sanders</i>	Mr. and Mrs. James Scott
Japonica Small	<i>Shuchuka</i>	Mr. and Mrs. Hallstone
Runner-Up	<i>Something Beautiful</i>	Mr. and Mrs. Les Meister
Japonica Miniature	<i>Night Rider</i>	Steve Campbell
Runner-Up	<i>Lady Humes Blush</i>	Steve Campbell
Reticulata Very Large	<i>Nuccio's Ruby</i>	Larry and Nancy Pitts
Runner-Up	<i>Hulyn Smith</i>	Edith Mazzei
Reticulata Large	<i>Francie L. Var.</i>	Mr. and Mrs. E. Achterberg
Runner-Up	<i>Valentine Day</i>	H. and D. Smith
Best Hybrid	<i>Julia Hamiter</i>	H. and D. Smith
Runner-Up	<i>Sylvia May Wells</i>	Mr. and Mrs. Les Meister
Best White	<i>Nuccio's Gem</i>	Virginia Rankin
Runner-Up	<i>Ragland Supreme</i>	H. and D. Smith
Best Seedling	<i>Tom Lee</i>	
Runner-Up	<i>David L. Feathers</i>	
Youth Japonica		
Over 4½	<i>Alta Gavin</i>	Audrey Schumer
Under 4½	<i>Spring Sonnet</i>	Mirian Yonan
Reticulata	<i>Dr. Clifford Parks</i>	Justin Bergamini
Hybrid	<i>Julie Var.</i>	Justin Bergamini
Sweepstakes		
Most Blues (53)		Robert Ehrhart
Runner-Up (52)	<i>Grand Prix Var.</i>	Mr. and Mrs. Bergamini
Best 3 V.L. Japonicas	<i>White Nun</i>	Larry and Nancy Pitts
Runner-Up	<i>Tomorrow Park Hill</i>	Mr. and Mrs. Les Meister
Best 3 Large Japonica	<i>Swan Lake</i>	Mr. and Mrs. E. Achterberg
Runner-Up	<i>Wildfire</i>	Larry and Nancy Pitts
Best 3 Medium Japonica	<i>Ragland Supreme</i>	Robert E. Ehrhart
Runner-Up	<i>Lady Humes Blush</i>	H. and D. Smith
Best 3 Small Japonica	<i>Ave Maria Var.</i>	Steve Campbell
Runner-Up	<i>Fircone Var.</i>	Mr. and Mrs. Bergamini
Best 3 Miniatures	<i>Tinsie</i>	Mr. and Mrs. Anthony Pinheiro
Runner-Up	<i>Mrs. George Bell</i>	Mr. and Mrs. Bergamini
Best 5 Japonica	<i>Magnoliaflora</i>	Mr. and Mrs. E. Achterberg
Runner-Up	<i>Curtain Call</i>	Virginia Rankin
Best 3 Reticulata	<i>Dr. Clifford Parks</i>	Mr. and Mrs. Leslie Lewis
Runner-Up	<i>Mary Phoebe Taylor</i>	Mr. and Mrs. Bergamini
Best 3 Hybrids	<i>Taylor's Perfection</i>	Mr. and Mrs. Lesmeister
Runner-Up		Mr. and Mrs. Bergamini
Collection 9 Different		Mrs. William Breuner
Collection 4 Different Japonica		Mrs. William Breuner

Descanso Show

Best Large Japonica
 Runner-Up
 Best Medium Japonica
 Runner-Up
 Best Small Japonica
 Runner-Up
 Best Miniature Japonica
 Runner-Up
 Best Large Reticulata Hybrid
 Runner-Up
 Best Very Large Reticulata Hybrid
 Runner-Up
 Best Non-Retic Hybrid
 Runner-Up
 Best 3 Large Japonicas
 Runner-Up
 Best 3 Medium Japonicas
 Runner-Up
 Best 3 Boutonniere Japonicas
 Runner-Up
 Best 5 Japonicas
 Runner-Up
 Best 3 Reticulata Hybrids
 Runner-Up
 Best 5 Reticulatas
 Runner-Up
 Best 3 Non-Reticulata Hybrids
 Runner-Up
 Best Species Bloom
 Best Treated Large Japonica
 Runner-Up
 Best Treated Medium Japonica
 Runner-Up
 Best Treated Reticulata Hybrid
 Runner-Up
 Best Japonica Seedling, Medium,
 Small, or Miniature
 Best Seedling Reticulata Hybrid
 Best Seedling Non-Retic Hybrid
 Best Novice Bloom over 4"
 George Lewis Trophy — Best of Show
 Award of Merit
 Best White Bloom
 Runner-Up

Swan Lake
Tomorrow Park Hill
Wildfire
Midnight Var.
Alison Leigh Woodroof
Kitty
Man Size
Little Slam
Harold Paige
Dr. Clifford Parks Var.
Cornelian
Valley Knudsen
Pink Dahlia
Kramer's Fluted Coral
Grand Slam
White Nun
Jennie Mills
Silver Chalice
Little Slam
Pearls Pet
Julia France
Jennie Mills
Francie L.
Valley Knudsen
Harold Paige
Crimson Robe
Waltz Time Var.
Freedom Bell
At-No Izumi
Tomorrow Park Hill
Pirate's Gold
Margaret Davis
Magnolia Flora
Harold Paige
Royalty

Seedling
Seedling #80
Francie L
Cornelian

Man Size
Silver Cloud

Lee Chow
 James Randall
 Mr. and Mrs. Robert McNeil
 Lee Chow
 Dr. and Mrs. F. Schumacher
 James Randall
 Mr. and Mrs. Jack Woo
 Art Gonos Family
 D. T. Gray Family
 Mr. and Mrs. Sergio Bracci
 James Randall
 Mr. and Mrs. Jack Woo
 Dr. and Mrs. Richard Stiern
 Marvin Belcher
 Mr. and Mrs. Jack Woo
 Mr. and Mrs. Wilbur Ray
 Dr. and Mrs. Richard Stiern
 Art Gonos Family
 Mr. and Mrs. Robert Kellar
 Mr. and Mrs. Robert Kellar
 Dr. and Mrs. Richard Stiern
 Dr. and Mrs. Richard Stiern
 Mr. and Mrs. Robert Jaacks
 Mr. and Mrs. Jack Woo
 Mr. and Mrs. Sergio Bracci
 Mr. and Mrs. Robert Jaacks
 Mr. and Mrs. Grady Perigan
 Art Gonos Family
 Mel Belcher
 Art Gonos Family
 Mr. and Mrs. Ab Summerson
 James Randall
 Art Gonos Family
 Mr. and Mrs. Sergio Bracci
 Mr. and Mrs. Sergio Bracci
 Mr. and Mrs. Sergio Bracci
 Mr. and Mrs. Jack Woo
 Kramer's
 June De Witt
 James Randall
 Dr. and Mrs. R. Stiern
 Herman Belcher
 Mr. and Mrs. Ab Summerson

Court of Honor

Sawada's Dream
Emmet Pfinstl Var.
Sweet Dream
Ave Maria
Kuro-Tsubaki
Lemon Drop
Little Michael
Emma Gaeta
Mandalay Queen
Leaf Pink
Al Gunn

Dr. and Mrs. R. Stiern
 Dr. Lee Chow
 Mel Belcher
 Mr. and Mrs. Jack Woo
 Dr. Lee Chow
 Mr. and Mrs. Grady Perigan
 Dr. and Mrs. H. Schumacher
 Dr. and Mrs. H. Schumacher
 Fritz Kahen
 Dr. and Mrs. H. Schumacher
 Mr. and Mrs. Ralph Bernhardt

Nuccio's Ruby
Moonlight Bay
Waltz Time
Angel Wings
Grand Slam Var.
Lady Laura
Elegans Supreme
Marie Mackall
Wildfire
Pink Dahlia
Valentine Day
Coral Delight

Mr. and Mrs. Sergio Bracci
 Mr. and Mrs. Wilbur Ray
 Marvin Belcher
 Peggy Konalski
 Dr. and Mrs. H. Schumacher
 Dr. Lee Chow
 Herman Belcher
 James Randall
 Dr. Lee Chow
 Art Gonos Family
 Herman Belcher
 Art Gonos Family

Huntington Show

Best Treated Large Japonica
 Runner-Up
 Best Treated Medium Japonica
 Runner-Up
 Best Treated Boutonniere Japonica
 Runner-Up
 Best Treated Reticulata Hybrid
 Runner-Up
 Best Treated Non-Reticulata Hybrid
 Runner-Up
 Best Non-Treated Large Japonica
 Runner-Up
 Best Non-Treated Medium Japonica
 Runner-Up
 Best Non-Treated Boutonniere Japonica
 Runner-Up
 Best Non-Treated Retic. Hybrid
 Runner-Up
 Best Non-Treated Non-Reticulata Hybrid
 Runner-Up
 Best Formal Double
 Best Species Bloom
 Runner-Up

Tomorrow Park Hill
Grand Prix
Raspberry Ice
Nuccio's Jewel
Maroon & Gold
Kitty
Curtain Call
Emma Gaeta
Waltz Time Var.
Kramer's Fluted Coral
Carter's Sumburst
Grand Slam
Midnight
Glen 40 Special
Splash-O-White
Kewpie Doll
Emma Gaeta
Pharoah
South Seas
Freedom Bell
Nuccio's Gem
Shibauri Egao
Egao

Mr. and Mrs. Robert Jaacks
 Mr. and Mrs. Sergio Bracci
 Mr. and Mrs. Sergio Bracci
 D. T. Gray Family
 Mr. and Mrs. Dean Alltizer
 Mr. and Mrs. Sergio Bracci
 Mr. and Mrs. Dean Alltizer
 Lee Chow
 Herman Belcher
 Mel Belcher
 Mr. and Mrs. Sergio Bracci
 Mr. and Mrs. A. E. Summerson
 Herman Belcher
 Mr. and Mrs. Robert Jaacks
 Mr. and Mrs. Sergio Bracci
 Mr. and Mrs. Sergio Bracci
 Mr. and Mrs. Sergio Bracci
 Mr. and Mrs. Robert Jaacks
 Mr. and Mrs. Dean Alltizer
 Mr. and Mrs. Sergio Bracci
 Mr. and Mrs. Sergio Bracci
 Mr. and Mrs. Julius Christinson

Court of Honor

Dr. Clifford Parks
Elsie Jury
Miss Tulare
Valentine Day
Harold Paige
Clark Hubbs Var.
Baby Pearl
Eleanor Martin Supreme
Anita
South Seas
Dr. Clifford Parks
Feathery Touch
Tomorrow Park Hill
Little Slam Var.
Ragland Supreme
Men's Mini
Silver Clouds
Lasca Beauty
Shiro Chan
Nuccio's Pearl

Mr. and Mrs. Robert Jaacks
 Mr. and Mrs. Sergio Bracci
 Mr. and Mrs. Sergio Bracci
 Mr. and Mrs. Robert Jaacks
 Mr. and Mrs. Sergio Bracci
 Mr. and Mrs. A. E. Summerson
 Mr. and Mrs. Bob Van Zandt
 Mr. and Mrs. Sergio Bracci
 Mel Belcher
 Mr. and Mrs. Robert Jaacks
 Mr. and Mrs. Robert Jaacks
 Mr. and Mrs. Robert Jaacks
 Mr. and Mrs. Sergio Bracci
 Marvin Belcher
 Mr. and Mrs. A. E. Summerson
 Mr. and Mrs. Julius Christinson
 Mr. and Mrs. Sergio Bracci
 D. T. Gray Family
 Mel Belcher
 Mr. and Mrs. Robert Jaacks

Camellia Society of Kern County

39th Annual Camellia Show February 28 and March 1, 1987

Best Large Japonicas	<i>Han-Ling Snow</i>	Dr. and Mrs. Leland Chow
Runner-Up	<i>Mrs. D. W. Davis</i>	Marvin Belcher
Best Medium Japonicas	<i>Iwane</i>	Dr. and Mrs. Leland Chow
Runner-Up	<i>Prima Ballerina</i>	Mr. and Mrs. Melvin Canfield
Best Miniature Japonicas	<i>Baby Pearl</i>	Mr. and Mrs. Julius Christenson
Runner-Up	<i>Maroon & Gold</i>	Dr. and Mrs. Leland Chow
Best 3 Large Japonicas	<i>Elegans Supreme</i>	Sergio and Elsie Bracci
Runner-Up	<i>Julia France</i>	Dr. and Mrs. Richard Stiern
Best 3 Medium Japonicas	<i>Magnolia Flora</i>	Dr. and Mrs. Leland Chow
Runner-Up	<i>Midnight</i>	Sergio and Elsie Bracci
Best 3 Miniature Japonicas	<i>Hishi-Karaito</i>	Dr. and Mrs. Leland Chow
Runner-Up	<i>Pink Perfection</i>	Mr. and Mrs. Fred Dukes
Best Single Hybrid Reticulata	<i>Harold Paige</i>	Dr. and Mrs. Richard Stiern
Runner-Up	<i>Nuccio's Ruby Var.</i>	Al and Frances Gamper
Best Tray of 3 Hybrid Reticulatas	<i>Al Gunn</i>	Sergio and Elsie Bracci
Runner-Up	<i>Francie L Var.</i>	Sergio and Elsie Bracci
Best Single Hybrid Non-Reticulata	<i>Angel Wings</i>	Peggy Kovalski
Runner-Up	<i>Pink Dahlia</i>	Dr. and Mrs. Richard Stiern
Best Tray of 3 Hybrid Non-Reticulatas	<i>Pink Dahlia</i>	Dr. and Mrs. Richard Stiern
Runner-Up	<i>Charlean Var.</i>	Dr. and Mrs. Richard Stiern
Best Chemically Treated	<i>Harold Paige</i>	Sergio and Elsie Bracci
Runner-Up	<i>Maroon & Gold</i>	Sergio and Elsie Bracci
Best Seedling		Marvin Belcher
Best Sport	<i>Elizabeth Dowd Silver</i>	Dr. and Mrs. Leland Chow
Best Species	<i>Botan Yuki</i>	Ben Machall
Collector's Tray		Melvin Belcher
Runner-Up		Dr. and Mrs. Leland Chow
Best Arrangement		Charlotte Johnson
Best Teen Age Arrangement		Kim Boziuk
Best Child's Arrangement		Jill Humphrey
Best Novice Flower	<i>Dr. Tinsley</i>	Nancy F. King
Runner-Up	<i>Carter's Sunburst Pink</i>	Stacey Heisey

Court of Honor

Single Blossom:		Marvin Belcher
<i>Kramer's Fluted Coral</i>		Grady and Helen Perrigan
<i>Emma Gaeta Var.</i>		Robert and Shala McNeil
<i>Little Slam Var.</i>		Dr. and Mrs. Leland Chow
<i>Flame Var.</i>		Sergio and Elsie Bracci
<i>Valentine Day</i>		Grady and Helen Perrigan
<i>Man Size</i>		Dr. and Mrs. Richard Stiern
<i>Julia France</i>		Douglas and Nadine Wade
<i>Grand Slam</i>		Dr. and Mrs. Leland Chow
<i>Betty Foy Sanders</i>		Dr. and Mrs. Leland Chow
<i>Valley Knudsen</i>		Dr. and Mrs. Leland Chow
Tray of 3:		
<i>Miss Tulara</i>		Dr. and Mrs. Richard Stiern
<i>Coral Delight Var.</i>		Marvin Belcher
<i>Sawada's Dream</i>		Dr. and Mrs. Richard Stiern
<i>Tomorrow Park Hill</i>		Sergio and Elsie Bracci
<i>Grace Albritton</i>		Robert and Shala McNeil

Pomona Valley Camellia Society

February 14 & 15, 1987

Best Large & Very Large Japonica	<i>Kramer's Supreme</i>	Melvin Belcher
First Runner-Up	<i>Carter's Sunburst Pink</i>	Art Gonos Family
Second Runner-Up	<i>Tomorrow Park Hill</i>	Melvin Belcher
Best Medium Japonica	<i>Flame Var.</i>	Dr. Lee Chow
First Runner-Up	<i>Nellie McGrath Var.</i>	Dr. Lee Chow
Second Runner-Up	<i>Donckelarii</i>	Mr. and Mrs. Roger Treischel
Best Small Japonica	<i>Splash-O-White</i>	Wayne Altizer
Runner-Up	<i>Hishi-Karaito</i>	Robert and Shala McNeil
Best Miniature Japonica	<i>Man Size</i>	Melvin Belcher
Runner-Up	<i>Little Slam Var.</i>	Marvin Belcher
Best Tray of 3 Small or Miniature Japonica	<i>Maroon and Gold</i>	Mr. and Mrs. Walter Harmsen
Runner-Up	<i>Hishi-Karaito</i>	Robert and Shala McNeil
Best Small Hybrid or Reticulata	<i>Kramer's Fluted Coral</i>	Art Gonos Family
Runner-Up	<i>Freedom Bell</i>	Lester Dehmel
Best Miniature Hybrid or Reticulata	<i>Fragrant Pink</i>	Mr. and Mrs. Julius Christinson
Best Tray of 3 Miniature or Small Hybrid or Reticulata	<i>Coral Delight Var.</i>	Art Gonos Family
Runner-Up	<i>Kramer's Fluted Coral</i>	Art Gonos Family
Best Tray of 3 Large or Very Large Japonica	<i>Elegans Splendor</i>	Mr. and Mrs. Berkeley Pace
Runner-Up	<i>High Wide 'N Handsome</i>	Dr. and Mrs. Richard Stiern
Best Tray of 3 Medium Japonica		
Runner-Up	<i>Nuccio's Gem</i>	Ann Lund
Best Tray of 5 Large or Very Large Japonica	<i>Dixie Knight Var.</i>	Mr. and Mrs. Al Gamper
Runner-Up	<i>Julia France</i>	Dr. and Mrs. Richard Stiern
Best Tray of 5 Medium Japonica	<i>Elegans Supreme</i>	Mr. and Mrs. Sergio Bracci
Runner-Up	<i>Rudolph</i>	Art Gonos Family
Best Very Large Hybrid or Reticulata	<i>Glen 40</i>	Norma Mary
First Runner-Up	<i>Harold L. Paige</i>	Mr. and Mrs. Sergio Bracci
Second Runner-Up	<i>Emma Gaeta</i>	Grady and Helen Perigan
Best Large Hybrid or Reticulata	<i>Emma Gaeta Var.</i>	Melvin Belcher
First Runner-Up	<i>Miss Tulare</i>	Mr. and Mrs. Sergio Bracci
Second Runner-Up	<i>Valentine Day</i>	Melvin Belcher
Best Medium Hybrid or Reticulata	<i>Valentine Day Var.</i>	Dr. and Mrs. Richard Stiern
Runner-Up	<i>Waltz Time Var.</i>	Dr. and Mrs. Richard Stiern
Best Tray of 3 Very Large Hybrid or Reticulata	<i>Angel Wings</i>	D. T. Gray Family
Runner-Up	<i>Curtain Call</i>	Mr. and Mrs. Sergio Bracci
Best Tray of 3 Large Hybrid or Reticulata	<i>Dr. Clifford Parks</i>	Mr. and Mrs. Al Gamper
Runner-Up	<i>Kohinor</i>	Benjamin Berry
Best Tray of 3 Medium Hybrid or Reticulata	<i>Cornelian</i>	Jerry Biewend
Runner-Up	<i>Waltz Time Var.</i>	Dr. and Mrs. Richard Stiern
Best Tray of 5 Very Large Hybrid or Reticulata	<i>Angel Wings</i>	Mr. and Mrs. Sergio Bracci
Runner-Up	<i>Harold L. Paige</i>	Mr. and Mrs. Sergio Bracci
Best Tray of 5 Large Hybrid or Reticulata	<i>Francie L.</i>	Mr. and Mrs. Sergio Bracci
Runner-Up	<i>Cornelian</i>	John and Sonia Movich
Best Tray of 5 Medium Hybrid or Reticulata	<i>Valley Knudsen</i>	D. T. Gray Family
Runner-Up	<i>Angel Wings</i>	D. T. Gray Family

Best Species
 Runner-Up
 Best Fragrant Bloom
 Best Special Culture, Japonica
 Runner-Up
 Best Special Culture,
 Hybrid or Reticulata
 Runner-Up
 Best Collector's Tray of 3
 Best Novice

Award of Merit
 Award of Merit
 Award of Merit
 Award of Merit
 Best Intermediate

Award of Merit
 Award of Merit

Julia France
Moonlight Bay
Eleanor Martin Supreme
Tom Knudsen
Demi-Tasse
Little Red Ridinghood
Man Size
Coral Delight Var.
Freedom Bell
Elegans Supreme
Jennie Mills
Curtain Call
Dr. Clifford Parks
Cornelian
Francie L. Var.
Francie L. Var.
Nuccio's Ruby
Pharaoh
William Hertrich
Elegans Champagne
Otto Hopfer
Purity

Egao
Botan-Yuki
Lutchuensis
 K. C. Hallstone Award
Elegans Supreme
Pirates Gold

Harold L. Paige
Cornelian

Valley Knudsen
 Harlan Covey Award
Mrs. George Bell
Elegans Splendor

Brigadoon
Tiffany
E. G. Waterhouse
 Hubert Reeves Award
Tomorrow Park Hill
Que Sera Sera

Herman Belcher
 Mr. and Mrs. Berkeley Pace
 Herman Belcher

Art Gonos Family
 Mr. and Mrs. Sergio Bracci

Mr. and Mrs. Sergio Bracci
 Mr. and Mrs. Milton Schmidt
 Mr. and Mrs. Sergio Bracci
 Helen Maas

Ann Lund
 Ann Lund
 Dena Radford
 Wynne Furth
 Mr. and Mrs. Gene Daniels

Barbara and Don Wheeler
 Paul and Carol Watson

Court of Honor

Marvin Belcher
 Mr. and Mrs. George Butler
 Mr. and Mrs. Milton Schmidt
 Mr. and Mrs. Berkley Pace
 Robert and Shala McNeil
 Mr. and Mrs. Walter Harmsen
 Melvin Belcher
 Mr. and Mrs. Sergio Bracci
 Mr. and Mrs. Sergio Bracci
 Mr. and Mrs. Sergio Bracci
 Dr. and Mrs. Richard Stiern
 Mr. and Mrs. Sergio Bracci
 Dr. and Mrs. Richard Stiern
 Benjamin Berry
 Mr. and Mrs. Sergio Bracci
 Mr. and Mrs. Sergio Bracci
 Mr. and Mrs. Robert Jaacks
 Mr. and Mrs. Sergio Bracci
 John and Sonia Movich
 Art Gonos Family
 Art Gonos Family
 Mr. and Mrs. Gene Daniels



The San Diego Camellia Society

1987 Annual Show

Jan. 31 & Feb. 1, 1987

Balboa Park, San Diego, California

Best Large Japonica	<i>Tomorrow Park Hill Var.</i>	Caryll Pitkin
Runner-Up	<i>Harvey Short's Finale</i>	Dr. and Mrs. Fred Mowrey
Best Medium Japonica	<i>Glen 40 Special</i>	H. G. Attrell
Runner-Up	<i>Eleanor Martin Supreme</i>	Sergio and Elsie Bracci
Best Small Japonica	<i>Tom Thumb</i>	Mr. and Mrs. Christinson
Runner-Up	<i>KiKu Toji Pointed</i>	Bob and Shala McNeil
Best Miniature Japonica	<i>Grace Albritton</i>	Mel Belcher
Runner-Up	<i>Man Size</i>	Mel Belcher
Best Reticulata Hybrid	<i>Bill Johnston</i>	Mel Belcher
Runner-Up	<i>Francie L</i>	Dr. and Mrs. Fred Mowrey
Best Non-Retic. Hybrid	<i>Anticipation Var.</i>	Mel Belcher
Runner-Up	<i>Angel Wings</i>	Mel Belcher
Best 3 Large Japonicas	<i>Silver Cloud</i>	Sergio and Elsie Bracci
Runner-Up	<i>Tomorrow Park Hill</i>	Sergio and Elsie Bracci
Best 3 Medium or Small Japonicas	<i>Sawada's Dream</i>	Dr. and Mrs. Stiern
Runner-Up	<i>Herme</i>	D. T. Grey Family
Best 3 Retic. Hybrids	<i>Cornelian</i>	Sergio and Elsie Bracci
Runner-Up	<i>Francie L</i>	Sergio and Elsie Bracci
Best 3 Non-Retic. Hybrids	<i>Freedom Bell</i>	Sergio and Elsie Bracci
Runner-Up	<i>Angel Wings</i>	Mr. and Mrs. Pace
Best Species Bloom	<i>Shibori Egao</i>	Dave and Alma Wood
Best Treated Japonica	<i>Elegans Champagne</i>	Al and Frances Gamper
Runner-Up	<i>Tomorrow Park Hill</i>	Sergio and Elsie Bracci
Best Treated Retic. Hybrid	<i>Dr. Clifford Parks</i>	Sergio and Elsie Bracci
Runner-Up	<i>Francie L</i>	Mr. and Mrs. Jaacks
Best Treated Non-Retic. Hybrid	<i>Elsie Jury</i>	Mr. and Mrs. Gamper
Runner-Up	<i>Fair Jury</i>	Mr. and Mrs. Gamper
Best Seedling	<i>unnamed seedling</i>	Kramers Bros. Nursery
Best Graft	<i>Tama No Ura</i>	Edalee Harwell
Best Plant in Bloom	<i>Dr. Clifford Parks</i>	Dean Turney
Best Novice Bloom	<i>Red Crystal</i>	C. Jasak and P. Meistrell
Runner-Up	<i>Kramer's Delight</i>	Gene Daniels

Court of Honor

<i>Astronaut</i>	Dr. and Mrs. Stiern
<i>Emma Gaeta</i>	Dean and Marcie Alltizer
<i>Ave Maria</i>	Mr. and Mrs. McNeil
<i>Cotton Tail</i>	Marvin Belcher
<i>Dixie Night Supreme</i>	Mr. and Mrs. Perigan
<i>Emmett Barns</i>	Leland and Arlene Chow
<i>Emma Gaeta</i>	Mr. and Mrs. Pace
<i>Fire Chief Var.</i>	Mr. and Mrs. Gamper
<i>Arcadia</i>	D. T. Gray Family
<i>Shiro Chan</i>	Sergio and Elsie Bracci
<i>Katie</i>	Mr. and Mrs. Berry
<i>Nuccio Cameo</i>	Mr. and Mrs. Treischel
<i>Wild Fire</i>	Dr. and Mrs. Stiern
<i>Elegans Splendor</i>	Sergio and Elsie Bracci
<i>Adolphe Audusson Sp.</i>	James Wilkin
<i>Dr. Clifford Parks</i>	Mildred Murray
<i>Waltz Time Var.</i>	Dr. and Mrs. Chow
<i>Nuccio's Gem</i>	Mr. and Mrs. Pace

South Coast Camellia Society Winners 1987

Large to Very Large Treated Japonicas	<i>Grand Prix</i>	Al and Frances Gamper
Runner-Up	<i>Katie Var.</i>	Al and Frances Gamper
Medium Treated Japonicas	<i>Eleanor Martin Supreme</i>	Al and Frances Gamper
Runner-Up	<i>Pink Frost</i>	Wilbur and Mary Ann Ray
Large to Very Large		
Non-Treated Japonicas	<i>Elegans Splendor</i>	Mel Belcher
Runner-Up	<i>Silver Cloud</i>	Sergio and Elsie Bracci
Medium Non-Treated Japonicas	<i>Harn-No-Utena</i>	D. T. Gray Family
Runner-Up	<i>Eleanor Martin Supreme</i>	Mr. and Mrs. M. L. Schmidt
Miniature Non-Treated Boutonnieres	<i>Showle</i>	Wilbur and Mary Ann Ray
Runner-Up	<i>Kawpie Doll</i>	D. T. Gray Family
Small Non-Treated Boutonnieres	<i>Lady Hume's Blush</i>	Wilbur and Mary Ann Ray
Runner-Up	<i>Dragons Eye Var.</i>	Sergio and Elsie Bracci
Non-Treated Japonicas —		
South Coast Society Members	<i>Mrs. D. W. Davis</i>	Wally and Erica Jones
Runner-Up	<i>Evan Farmer</i>	H. S. Putnam
Non-Treated Reticulata &		
Non-Reticulata Hybrids	<i>Mouchang</i>	J. and S. Movich
Runner-Up	<i>Debut</i>	H. S. Putnam
Large to Very Large & Medium		
Treated Reticulata	<i>Dr. Clifford Parks</i>	Dorothy Davis
Runner-Up	<i>Pharoah</i>	Sergio and Elsie Bracci
Large to Very Large &		
Medium Non-Treated Reticulata	<i>Emma Gaeta</i>	Mr. and Mrs. B. M. Pace
Runner-Up	<i>Pharaoh</i>	Mr. and Mrs. M. L. Schmidt
Large to Very Large & Medium		
Treated Non-Reticulata Hybrids	<i>Pink Dahlia</i>	Mr. and Mrs. Jaacks
Runner-Up	<i>South Seas</i>	Mr. and Mrs. Jaacks
Large to Very Large & Medium		
Non-Treated Non-Reticulata Hybrids	<i>Kramer's Fluted Coral</i>	Chuck Gerlach
Runner-Up	<i>Shibori Egao</i>	Dave and Alma Wood
Non-Treated Species	<i>Shishi Gashira</i>	Elsie and Sergio Bracci
Trays of 3 Treated Japonicas		
Large to Very Large & Medium	<i>Donckelarii</i>	Al and Francis Gamper
Trays of 3 Treated Reticulata		
& Non-Reticulata Hybrids	<i>Dr. Clifford Parks</i>	Mr. and Mrs. R. T. Jaacks
Tray of 3 Non-Treated Japonicas		
Large to Very Large & Medium	<i>Herme</i>	D. T. Gray Family
Tray of 3 Non-Treated Reticulata		
& Non-Reticulata Hybrids	<i>Kramer's Fluted Coral</i>	Mr. and Mrs. B. M. Pace
Tray of 3 Non-Treated		
Boutonnieres, Miniature & Small	<i>Tama No Ura</i>	Sergio & Elsie Bracci
Non-Treated Seedlings		
Reticulata & Reticulata Hybrids	<i>Phil Sims</i>	Dale Christenson

Court of Honor

<i>Angel Wings</i>	Mr. and Mrs. R. T. Jaacks
<i>South Seas</i>	Mr. and Mrs. R. T. Jaacks
<i>Silver Clouds</i>	Sergio and Elsie Bracci
<i>Pavlova</i>	Sergio and Elsie Bracci
<i>Francie L</i>	Sergio and Elsie Bracci
<i>Tomorrow Crown Jewel</i>	Dean and Marcie Alltizer
<i>Dixie Knight Supreme</i>	Al and Frances Gamper
<i>Nuccio Pearl</i>	A. L. Summerson
<i>Margaret Davis</i>	D. T. Gray Family

Midnight
Mark Allen
Giulio Nuccio Var.
Valley Knudsen
Little Michael
Adolphe Audusson
Seedling
Man Size
Hishi-Karaito
Cornelian
Freedom Bell
Spring Festival
Freedom Bell
Egao
Mouchang
Fimbreata
Miss Charleston Var.
Donckelarii
Cassilda

Ab and Leone Summerson
 Mr. and Mrs. B. M. Pace
 Mel Belcher
 Dean and Marie Alltizer
 D. T. Gray Family
 Virginia Desmond
 Grady and Helen Perigan
 Melvin B. Belcher
 Dave and Alma Wood
 H. S. Putnam
 Sergio and Elsie Bracci
 Wayne and Leita Alltizer
 Chuck Gerlach
 Dave and Alma Wood
 Mr. and Mrs. Caryll W. Pitkin
 Mr. and Mrs. Roger Treischel
 Dean and Marg. Alltizer
 A. and F. Gamper
 Grady and Helen Perigan

Temple City 1987

Best Large Japonica
 Runner-Up
 Best Medium Japonica
 Runner-Up
 Best Small Japonica
 Runner-Up
 Best Miniature Japonica
 Runner-Up
 Best Reticulata Hybrid
 Runner-Up
 Best Non-Reticulata Hybrid
 Runner-Up
 Best Treated Japonica
 Runner-Up
 Best Treated Reticulata Hybrid
 Runner-Up
 Best Treated Non-Reticulata Hybrid
 Runner-Up
 Best 3 Large Japonicas
 Runner-Up
 Best 3 Medium Japonicas
 Runner-Up
 Best 3 Boutonniere Japonicas
 Runner-Up
 Best 3 Reticulata Hybrids
 Runner-Up
 Best 3 Non-Reticulata Hybrids
 Runner-Up
 Best 3 Mixed Varieties
 Runner-Up
 Best 5 Large Japonicas
 Runner-Up

Silver Cloud
Tomorrow Park Hill
Margaret Davis
Sawada's Dream
Maroon & Gold
Alison Leigh Woodroof
Grace Albritton
Little Michael
Valentine's Day Var.
Dr. Clifford Parks
Angel Wings
Waltz Time Var.
Magnolia Flora
Pirate's Gold Var.
Harold Paige
Curtain Call
Anticipation Var.
Elsie Jury
Elegans Splendor
Elegans Champagne
Sawada's Dream
Jennie Mills
Little Michael
Alison Leigh Woodroof
Dr. Clifford Parks Var.
Arcadia
Coral Delight
Cinnamon Cindy
Little Michael
Tomorrow Park Hill
Tomorrow Park Hill
Grand Slam

Mr. and Mrs. Jack Woo
 Mr. and Mrs. Sergio Bracci
 D. T. Gray Family
 Dr. Lee Chow
 Chuck Gerlach
 Pat Greutert
 Herman Belcher
 Marvin Belcher
 Dr. and Mrs. Richard Stiern
 Mr. and Mrs. Sergio Bracci
 Mel Belcher
 Dr. and Mrs. Richard Stiern
 Mr. and Mrs. Jack Woo
 Mr. and Mrs. Sergio Bracci
 Mr. and Mrs. Sergio Bracci
 Mr. and Mrs. Robert McNeil
 Mr. and Mrs. Robert Jaacks
 Mr. and Mrs. Sergio Bracci
 Mr. and Mrs. Berkely Pace
 Dr. and Mrs. Richard Stiern
 Dr. and Mrs. Richard Stiern
 Marvin Belcher
 Dr. and Mrs. Richard Stiern
 Mr. and Mrs. Sergio Bracci
 Mr. and Mrs. Sergio Bracci
 Mr. and Mrs. Sergio Bracci
 Mr. and Mrs. Pat Novak
 Mel Belcher
 Mr. and Mrs. Jack Woo
 Mr. and Mrs. Sergio Bracci
 Mr. and Mrs. Sergio Bracci

Best 5 Medium &
 Boutonniere Japonicas
 Runner-Up
 Best 5 Hybrids
 Runner-Up
 Best Species Bloom
 Runner-Up
 Best Novice Large Japonica
 Best Novice Medium Non-Reticulata
 Award of Merit

Sawada's Dream
Herme
Pharoah
Waltz Time Var.
Star Above Star
Botan Yuki
Elegance Var.
Coral Delight

Dr. and Mrs. Richard Stiern
 D. T. Gray Family
 Mr. and Mrs. Sergio Bracci
 Dr. and Mrs. Richard Stiern
 Mr. and Mrs. Jack Woo
 Mel Belcher
 Jeanne Trefzger
 Randy Mesler
 Sergio Bracci

Court of Honor

Kitty
Little Slam
Anticipation Var.
Carter's Sunburst
Grand Prix
Emma Gaeta Var.
Francie L. Var.
Valentine's Day Var.
Miss Tulare Var.
Rudolph
Lily Pons
Nuccio's Gem
Pavlova
Dr. Clifford Parks
Dixie Knight Supreme
Harold Paige
Katie Var.
Elizabeth Weaver
Han-Ling Snow
Giulio Nuccio Var.

Mr. and Mrs. Jack Woo
 Mel Belcher
 Mel Belcher
 Mr. and Mrs. Al Gamper
 Mr. and Mrs. Ab Summerson
 Mr. and Mrs. Robert Jaacks
 D. T. Gray Family
 Mr. and Mrs. Robert McNeil
 Mr. and Mrs. Sergio Bracci
 Mr. and Mrs. Julius Christinson
 Mr. and Mrs. Mel Canfield
 Mr. and Mrs. Walt Harmsen
 Marvin Belcher
 Mr. and Mrs. Caryl Pitkin
 Mel Belcher
 D. T. Gray
 Mr. and Mrs. Wilkin Garner
 Mr. and Mrs. Jack Woo
 Dr. Lee Chow
 Herman Belcher

Bill Woodroof

by Pat Greutert

Bill Woodroof endures in the camellia world like the rock of ages. He made his mark early by producing and continuously updating an indispensable reference book for camellia growers everywhere.

That first book, *The Camellia, Its Culture and Nomenclature*, was published in 1947. The nineteenth, revised 1987 edition — title by now shortened to *Camellia Nomenclature* — came off the press in October, 1986.

Careful, systematic, always consistent, Bill has already begun the next edition. A four-inch thick, black loose-leaf notebook holds a page with each nomenclature column pasted in, leaving room for new additions. As new registrations are sent in he enters them in their proper place ready for the printer in two years.

Bill relishes his unique position. Tall, with an athlete's easy bearing, he rapid fires opinions with a courtroom lawyer's decisiveness.

"You've heard of dictators, haven't you? Well, I'm one," he states vehemently. Because of this firmness "Nomenclature" thrives.

Aside from compiling "Nomenclature," Bill further indulges his camellia hobby by testing and giving his perceptive opinion on new blooms for nurserymen and fellow hobbyists.

Bill retired as general attorney for Arco in 1972 and in February, 1986, from his job as special legal consultant during construction of the Alaska Pipeline.

Carrying nervousness to an extreme, Bill finds himself unable to enter or judge a flower show. When his

alma mater UCLA has a team playing a basketball or football game, wife Barbara watches and tells him when someone makes a basket or a touchdown while Bill, too wrapped up in the game to watch, works outside with his camellias.

Fortunately, Nuccio's Nurseries has provided the perfect outlet for Bill's energy. He travels to Altadena each day and, with his long stride and often a caliper for measuring bloom size, walks through acres of flowers checking seedlings and new blooms.

If Julius Nuccio takes him to see a new flower and Bill passes right by, Julius knows what he thinks of it. (Of course, Julius knows Bill is partial to those flowers which are big and red.)

Bill takes promising plants home to see how they'll perform in the San Fernando Valley.

The Woodroof garden in Sherman Oaks won't be pictured on a "Better Homes and Gardens" cover. Cursed with the camellia's grower's hex, adobe soil, Bill pots all his camellias and large collection of azaleas (mostly his favorite satsukis) in various-sized black plastic containers. Like sentinels, they line his backyard walks and low walls under a huge maple tree and fill his lath house.

One camellia does do amazingly well in the adobe soil. Wife Barbara bought a "Pink Perfection" in 1938 when they built their present home. She dug a hole by the front door, dropped the plant in and firmed the soil with her foot. Today, the limbs on that plant are as big as fire hoses and the flowers a delight.

During the fifties Bill got a numbered new variety from Vern McCaskill, a Pasadena nurseryman, to test and consider for introduction by McCaskill's Gardens. Bill glanced out his kitchen window one morning and noticed a fantastic white blossom on a plant. He ran out, saw it was Vern's and ran back to phone him. He told Vern the plant number. After searching his nursery for the mother plant, Vern called back and exclaimed franti-

cally, "I can't find it, Bill!"

Now when you see a lovely camellia named 'White Nun,' you'll know it came from scions clipped from Bill's plant and returned to Vern for propagation.

Bills has registered three of his own camellias: 'Barbara Woodroof,' a sport of Elegans (Chandler) var., 'Kristin Woodroof,' a seedling named after his oldest granddaughter, and 'Reg Ragland,' that big red seedling, named after his friend.

'Lynne Woodroof' was a Ragland introduction named after one of Bill's daughters. Vern McCaskill named one of his introductions 'Alison Leigh Woodroof' after another of Bill's daughters when, as a young child, she visited the nursery with her dad. At Vern's suggestion, she chose it as a namesake from a collection of new plants, thus demonstrating her father's selective eye for the best.

Through the years, Bill traveled all over the world on his job and for his hobby, sometimes 100,000 miles per year. He has no regrets except missing so much time with his family.

Like most camellia hobbyists, Bill has found joy, pleasure and satisfaction in his hobby, but nothing can touch the happiness commensurate with the friendships he has accumulated by giving of himself.

The following tribute introduced the American Camellia Society 1965 year book. Since that time, Bill has received honorary life memberships in the Pomona Valley and New Zealand Camellia Societies.

Dedication

The American Camellia Society Yearbook for 1965 is dedicated to William E. (Bill) Woodroof, a man who is known to all members of the American Camellia Society and, for that matter, to the entire camellia world, as the editor of *Camellia Nomenclature*. This is the official "bible" of camellia nomenclature for the Society and for all local camellia societies which conduct their shows in cooperation with ACS.

Where did *Camellia Nomenclature* come from, and why? To find the answers to these questions, one should know something of the background of Bill Woodroof. He was born in Merkle, Texas, October 4, 1907; as a lad, moved to Orange, California in time to star in football and basketball at Orange High School; repeated these activities and added a great deal of studying at the University of California in Los Angeles, from which he received an A.B. degree in 1929; without the football and basketball but with even more studying, he graduated from Harvard Law School in 1933. From then until January 1945 he was associated with the law firm of Bicksler, Parker & Catlin in Los Angeles. In 1936 he married Barbara, who is not only a charming and wonderful wife, but is also a competent and valued teammate in his camellia work. They have a son, Peter, and two daughters, Lynne and Alison.

During World War II, in addition to his law practice, Bill worked at night in an aircraft plant. The defense work in addition to his law practice proved such a heavy schedule that it resulted in a near physical collapse and his doctors ordered him to quit both and to rebuild his strength through outdoor activity. This he did, becoming Manager of California Camellia Gardens of San Fernando, where he remained until February, 1951.

You can be sure that this was congenial work for Bill because he had long been up to his ears in camellias. It was Barbara, and not Bill, who first caught the camellia bug. In 1938 they had moved into a new home. Bill, busy with breaking into the legal profession, had left all landscaping chores to Barbara and she had bought some small camellia plants which had not reached the blooming stage. One Saturday afternoon she inveigled him into going with her to a nearby nursery. There he saw a plant of 'Glen 40' covered with blooms. He fell, and fell hard. After that Barbara wondered why he began bringing her personal gifts at a rate to

which she had not been accustomed. She soon found the answer. Each morning after receiving a present she would go to the garden and find three or four new camellia varieties in gallon cans. (It seems to be instinctive with male camellia hobbyists to use this costly technique.)

Among the small plants which Bill bought were three which were labeled with the names 'Pink Bleichroeder,' 'Casa Blanca' and 'Huntington Pink.' Later when the plants bloomed, Bill found that they produced exactly the same flower in form, color and size. He was as bewildered as he was dismayed; but he soon found that all nurserymen were likewise bewildered, and that no one was really to blame. There was no registration of names, and there was no guide for either growers or nurserymen in naming camellias. He discussed the situation with friends and with nurserymen and became convinced that the situation would grow worse and worse as new seedlings were developed unless something could be done about it. So he resolved to do something about it himself.

Bill became associated with the writer in the Legal Department of Richfield Oil Corporation in February, 1951, and the key to the quality in him which has resulted in so much good for camellias and camellia people can be found in what one of the partners in his old law firm wrote to me about him. Bill had given this man, Mr. Frank D. Catlin, as a reference in relation to his qualifications as a lawyer. In response to my inquiry Mr. Catlin wrote: "We found Bill, as we all knew him, to be a lawyer who could not do things by halves and when he started to make a search of any one point, he went the limit and his ability in the courtroom was just as good as his ability to check and brief up the law."

This combination of ability and determination led Bill to start upon an intensive and exhaustive research into the field of camellia nomenclature which has continued to this day. In the

preparation of the first "Camellia Nomenclature" in 1947 and in its revisions of 1949, 1951, 1954, 1956, 1958, 1960, 1962 and 1964 he has built up a fine record of camellia names and varieties which is probably the most complete that exists anywhere in the world. For the older varieties, he has accomplished this by a vast amount of research into old records and by correspondence with other students of camellia nomenclature. As to the newer varieties, Bill keeps in close touch with all camellia areas by correspondence with friends, and he obtains either from the originator or from someone in the originator's area not only a description of every new seedling considered to be worthwhile, but also the place and date of origination, the date of introduction or publication and all other information available. Barbara has been of great assistance to him in keeping the records in an orderly fashion.

All of this has led to most of the principal honors which the camellia world can bestow. In January, 1953 the Directors voted unanimously to elect Bill as a Fellow in the American Camellia Society in recognition of "his invaluable contributions to the nomenclature of camellias." He was made an Hon-

orary Life Member of the Southern California Camellia Society by action of its Board of Directors on April 6, 1959. He is also an Honorary Life Member of the South Carolina Camellia Society. In October, 1960 Bill Woodroof and Dave C. Strother were elected to the "Hall of Fame" by the Men's Camellia Club of Shreveport, Louisiana for their work over the years in camellia nomenclature.

These honors speak volumes for Bill's contributions to camellias. Now, the writer would like to add a word about Bill as a person. He is a man of complete integrity, honest and forthright in word and deed. Honor and duty are very real watchwords with him. At the same time he is a warm human being, full of good humor and good sense, and as big of heart as he is of body. The writer sincerely believes that no one in the camellia world has more friends than Bill Woodroof and I am sure that it will be most gratifying to those friends that Bill has been designated to receive this additional tribute and honor from the American Camellia Society.

Reg Ragland
Los Angeles, California

**TO THOSE WHO MISS THE PICTURES
IN THIS ISSUE I APOLOGIZE. THERE
WAS TOO MUCH CATCH-UP TO DO.**

EDITOR

INDEX OF CAMELLIA REVIEW
Volume #48 — September-October, 1986 — March-April, 1987

ARTICLES

The Awakening Of The Yellow Camellia, Meyer Piet	2-4
California Camellia Show Schedule	1-19
California Camellia Show Results	1-20-24
Camellia Nomenclature, William Donnan	2-19
Camellia-Rama XII, Art Gonos	1-15
Camellia Awards For The Year 1986	1-28
1986 The Camellia Year That Was, Howard K. Burnette	3-11
Camellia Show Results	4-11-20
Contributions To The Camellia Review	1-17, 4-5
Contributions To The Nomenclature Fund	1-2, 4-5
The Central California Camellia Society And Its Shin Zen Connection, Edwin Streit	3-13
Come To The Fair, Marilee Gray	3-18
County Endangering A Source Of Revenue, Pat Greutert	2-8
Court Of Honor Workers, Bob & Alice Jaacks	3-8
A Crysanth Flower, Margaret MacDonald	2-3
Discussion Of Pruning At Pacific Meeting, Leone Summerson	4-6
The Early Bloomers, William Donnan	2-20
Fall 1986 Fresno Camellia Kick-Off Weekend, Grady Perigan	3-17
A Fragrant Lament, Ken Hallstone	3-7
Wilkins Garner, Pat Greutert	1-25
The Huntington Camellia Show, William Donnan	2-13
Innovations, Marilee Gray	2-9, 3-9, 4-3-5
Letters To The Editor, Robert E. Ehrhart	3-24
Letter to William Donnan, Andrew F. Sears	4-10
Luuu, Elsie & Sergio Bracci	1-18
McCaskill Memories	2-14
Minutes Of The SCGS Board Meeting, Warren Dickson	1-16
The Quest For The Yellow Camellia, William Donnan	1-3
Registration Of New Varieties, William Donnan	3-22
Search For Breschini's Pride-Success	2-12
The Seed Pickers	2-11
Silver Anniversary, Peter Grosso	2-17
Southern California Council Meeting	2-8
Southern California Camellia Society Membership	1-3-14
Southern Hospitality, Grady Perigan	2-15
A Tribute To Redwood City Peninsula Camellia Society, Howard E. Burnette	4-9
1986 Trophy Winners For Single Blooms, Don Bergamini	2-16
Touch Of Chinese Splendour Comes To Town, Chong Wing Hong	2-22
Tribute To Milton Y. Brown	1-2
Winner's Record Sheet, Pacific Gib Show	3-12
Bill Woodroof, Pat Greutert	4-20-23
A Working Reminder For Chief Clerks, Frances Butler	4-7

AUTHORS

Bergamini, Don	2-16	Grosso, Pete	2-17
Bracci, Elsie & Sergio	1-18	Hallstone, Ken	3-7
Burnette, Howard E.	3-11, 4-9	Jaacks, Bob & Alice	2-17
Butler, Frances	4-7	MacDonald, Margaret	2-8
Chong, Wing Hong	2-22	Perigan, Grady	2-15, 3-17
Dickson, Warren	1-16	Piet, Meyer	2-4
Donnan, William	2-13, 2-19, 2-20, 3-3, 3-22	Sears, Andrew F.	4-10
Ehrhart, Robert E.	3-24	Streit, Edwin	3-13
Gonos, Art	1-15	Summerson, Leone	4-6
Gray, Marilee	2-9, 3-5, 3-18, 4-3-5		

Directory of Other California Camellia Societies

CAMELLIA SOCIETY OF KERN COUNTY—President, Marvin Belcher; Secretary, Nadine Wade, 172 N. Jaye Street, Porterville 93257. Meetings: To be announced.

CAMELLIA SOCIETY OF MODESTO—President, Ron Jackson; Secretary, Merry Harris, 416 Maple St., Modesto 95351. Meetings: 2nd Tuesday, November through April, 7:30 p.m., Centenary Methodist Church, Room 6, Norwegian & McHenry Avenues, Modesto.

CAMELLIA SOCIETY OF ORANGE COUNTY—President, Dr. Ivan Richardson; Secretary, Mrs. Frances L. Butler, 1831 Windsor Lane, Santa Ana 92705. Meetings: 3rd Thursday, November through April, Tustin Branch Library, 345 Main Street, Tustin.

CAMELLIA SOCIETY OF SACRAMENTO—President, Thomas Lee; Secretary, Mrs. Lana Paulhamus, 1909 Discovery Way, Sacramento 95819. Meetings: 7:30, Fourth Wednesday, October through April, Shepard Garden & Arts Center, 3330 McKinley Blvd.

CENTRAL CALIFORNIA CAMELLIA SOCIETY—President, Ed Streit; Secretary, Ruth Ann Lewis, 6440 Sequoia Dr., Fresno 93711. Meetings: 3rd Wednesday, November through February, Sheraton Smugglers Inn, Fresno.

DELTA CAMELLIA SOCIETY—President, Jack Lewis; Secretary, Nancy Pitts, 2606 Desry's Blvd., Antioch 94509. Meetings: 2nd Tuesday, November through March, Oak Grove School, 2050 Minert Rd., Concord.

NORTHERN CALIFORNIA CAMELLIA SOCIETY—President, Don Bergamini; Secretary, David L. Hagmann, 464 Camino Sobrante, Orinda, 94563. Meetings: 1st Monday, November through April, Heather Farm Community Center, 301 N. San Carlos Drive, Walnut Creek.

PACIFIC CAMELLIA SOCIETY—President, Dean Alltizer; Secretary, Marcie Alltizer, 1253 Bruce Ave., Glendale, 91202. Meetings: 1st Thursday, November through April, 7:30 p.m., Descanso Gardens.

PENINSULA CAMELLIA SOCIETY—President, Ken Henley; Secretary, Cameron Ainsworth, 3879 Vineyard Dr., Redwood City 94061. Meetings: 4th Tuesday, October through March, Ampex Cafeteria, 411 Broadway, Redwood City.

POMONA VALLEY CAMELLIA SOCIETY—President, Melvin Belcher; Secretary, Dorothy Christinon, 3751 Hoover St., Riverside 95204. Meetings: 1st Tuesday, November through April, Pomona First Federal S & L, 1933 Foothill Blvd.

SAN DIEGO CAMELLIA SOCIETY—President, Cindy Drake; Secretary, Edalee Harwell, 2165 Leon Ave., San Diego 92154. Meetings: 3rd Wednesday, October through April, Casa Del Prado, Room 101, Balboa Park, San Diego.

SANTA CLARA COUNTY CAMELLIA SOCIETY—President, George Avery; Corresponding Secretary, Mrs. John Augis, 2245 Fairvalley Court, San Jose 95125. Meetings: 3rd Wednesday, October through April, Sumitomo Bank Bldg., 515 North 1st St., San Jose.

SONOMA COUNTY CAMELLIA SOCIETY—Correspondent, Jim Grant, 3282 Coffey Lane, Santa Rosa 95401.

SOUTH COAST CAMELLIA SOCIETY—President, Dr. Glenn Burroughs; Secretary, Pauline Johnson, 1251 10th St., San Pedro 90731. Meetings: 3rd Tuesday, October through May, 7:30 p.m., South Coast Botanic Gardens, 26300 Crenshaw Blvd., Palos Verdes Peninsula 90274.

TEMPLE CITY CAMELLIA SOCIETY—President, Helen Perigan; Secretary, Alice Jaacks, 5554 N. Burton Ave., San Gabriel 91776. Meetings: 3rd Thursday, Nov. 20, Ayres Hall; 4th Thursday, January through March, Lecture Hall; 4th Thursday, April 25, Ayres Hall.

SOUTHERN
CALIFORNIA
CAMELLIA
Society, Inc.

POST BOX 50525
PASADENA, CA 91105

EDWARDS H METCALF
PO BOX 29715
N HOLLYWOOD

CA 91609

4



Undelivered _____ Refused _____
Address not known _____
Incorrect address _____
No such street number _____
 Delivery attempted _____
Permit expired _____

Bulk Rate
U.S. Postage
PAID
Permit No. 740
Pasadena, CA

Return Postage Guaranteed